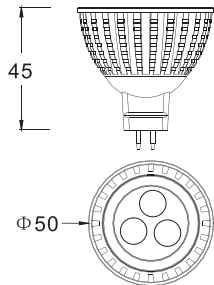




Item No.: **SUNISPWO-0903**

CE FC

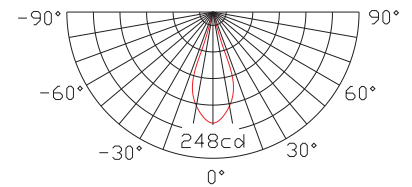


Specifications

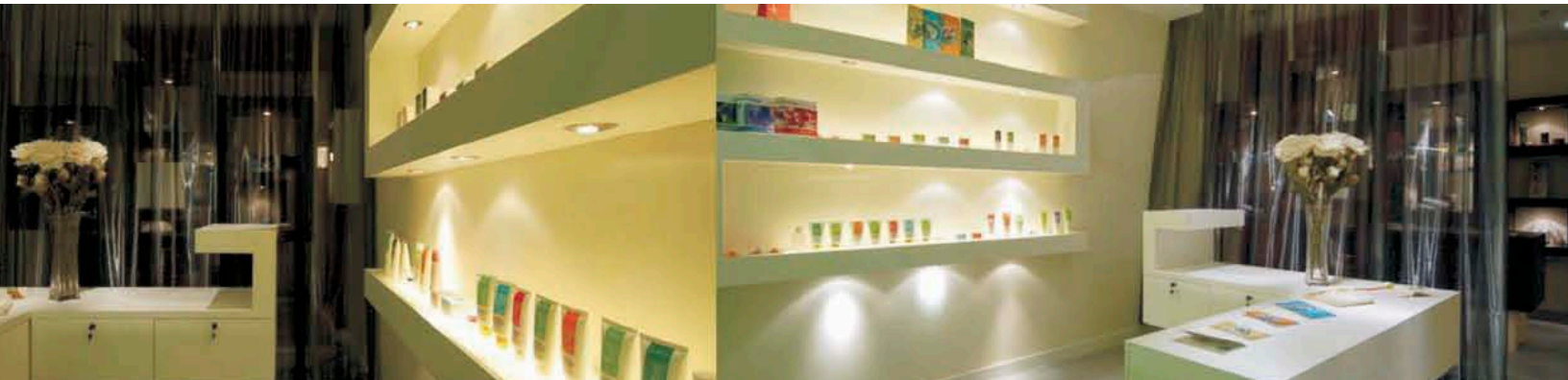
Input Voltage	12V AC/DC
Power Supply Efficiency	>85%
Total Power Consumption	3.8W
LED Model & Number	3×1W LEDs
LED Efficiency	105m/W
Total Lumens	270Lm
Beam Angle	30°/60°
Color Temperature	3000-3500K/4000-4500K/5000-7000K
Base	MR16/GU10
Dimension	Φ50×H45mm
Material	Aluminum Diecasting and Glass
Net Weight	0.05kg

Features

- Long lifetime (Up to 20,000 hours)
- Energy-saving (80% power saved)
- Aluminum heat sink
- Optional colors: white/red/blue/green/yellow
- Ip20 indoor application proposed



Light Distribution Curve
30°/60° available



Comparison between LED & Halogen Spot Light

